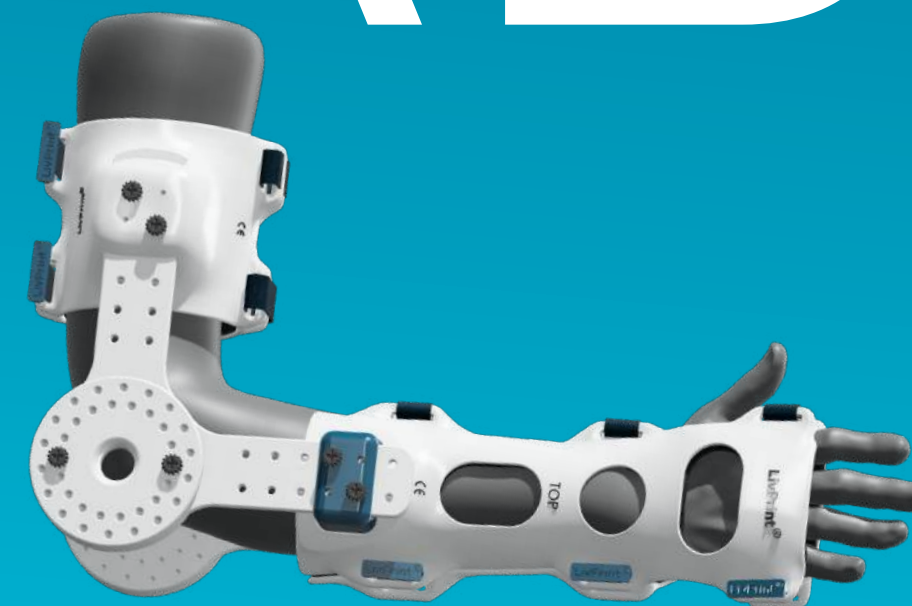




LivPrint™ LABS

www.livprintlabs.com



A bio-med engineering firm based out of Mumbai and Pune that designs and manufactures new-age orthoses with patented & proprietary innovations to better the process of healing and recuperation of orthopaedic injuries and conditions.



The LivPrint™ *EXO* *range of orthotics.*

- **Multi-size formats** caters to complete demography.
- **Ambidextrous products** reduce the stress of inventory and enable agile management of inventory.
- **Nimble product line**; easy to deploy in geographical areas that are hard-to-get-to.
- **Multiple use-case profiles** such as fractures, accidents, stabilisation, post-operative, Parkinson's, cerebral palsy, autism, etc.

“*The EXO portfolio of products is a proprietary and patented pre-sized range designed by LivPrint™ LABS to cater to a big market gap of existing plastering and taping solutions. A first-of-its-kind waterproof, Xray-able, MRI and CT scan friendly, and most importantly, pre-fabricated to size multi-application range that eliminates the pain points of doctors and physicians at multiple levels of application*”

Adios Plaster cast.

Hello, LivPrint™ EXO.

- A plaster takes time to apply. *LivPrint™ EXO* doesn't.
- A plaster doesn't shrink whilst your swelling shrinks too. *LivPrint™ EXO* does.
- A broken bone is protected by a plaster that itself can break or crack. *LivPrint™ EXO* doesn't.
- A plaster keeps you protected, but away from daily activities too. *LivPrint™ EXO* doesn't.
- To apply a plaster, you'll need a warm bucket of water. 5-6 plaster rolls. A couple of gloves. Wiping cloth. Two people, sometimes three. Cotton padding. Glue tape. *LivPrint™ EXO* needs none of the above, except one person.
- A plaster can sometimes weigh well over 2-3 kilos. *LivPrint™ EXO* weighs in at a max of 800 grams.
- A plaster cast gets itchy and smelly. *LivPrint™ EXO* doesn't.
- A plaster costs isn't extravagantly priced. Neither is *LivPrint™ EXO*.

SAME UNIT FOR
LEFT & RIGHT FOOT

KEEPS ANKLE
IMMOBILISED
AT NEUTRAL POSITION

FLAT ANTI-SLIP
FULL-SOLE
(5mm thickness)

LivPrint™ EXO
ANKLE UNIT
with modular sole options

500-650 grams

- WATER-RESISTANT
- HYPOALLERGENIC MATERIALS
- XRAY & MRI COMPATIBLE
- ADJUSTS WITH SWELLING
- TOUGH CONSTRUCTION

TOUGH CONSTRUCTION
ALLOWS FOR FULL WEIGHT BEARING

ROCKER SOLE
WITH GAIT-CYCLE CURVE

LivPrint® ANKLE UNIT

Product Size chart

LivPrint® ANKLE / X-SMALL
Launching soon

MEASURE CALF CIRCUMFERENCE
APPROXIMATELY AROUND
THE MARKED AREA

CALF

X-SMALL

Min: 6.5 / 7 inches
Max: 9 inches

SMALL

Min: 10.5 / 11 inches
Max: 14 inches

MEDIUM

Min: 13.5 / 14 inches
Max: 17 inches

LARGE

Min: 16.5 / 17 inches
Max: 20 inches

MEASURE ANKLE CIRCUMFERENCE
APPROXIMATELY AROUND
THE MARKED AREA

ANKLE

Min: 3 / 3.5 inches
Max: 5.5 inches

Min: 6 / 6.5 inches
Max: 9 inches

Min: 9 / 9.5 inches
Max: 12 inches

Min: 12 / 12.5 inches
Max: 15 inches

FOOT
LENGTH

Min: 4 / 4.5 inches
Max: 6.5 inches

Min: 6.5 / 7 inches
Max: 8.5 inches

Min: 8.5 / 9 inches
Max: 10.5 inches

Min: 10.5 / 11 inches
Max: 12.5 inches

MEASURE FOOT LENGTH

- WATER-RESISTANT
- HYPOALLERGENIC MATERIALS
- XRAY & MRI COMPATIBLE
- ADJUSTS WITH SWELLING
- TOUGH CONSTRUCTION



BREATHABLE OPENINGS
ON SURFACE FOR VENTILATION
AND WATER DISSIPATION



ALL METACARPALS ARE FREE
AND UNRESTRICTED

LEFT THUMB OPENING
FOR AMBIDEXTROUS FIT

LivPrint™ EXO

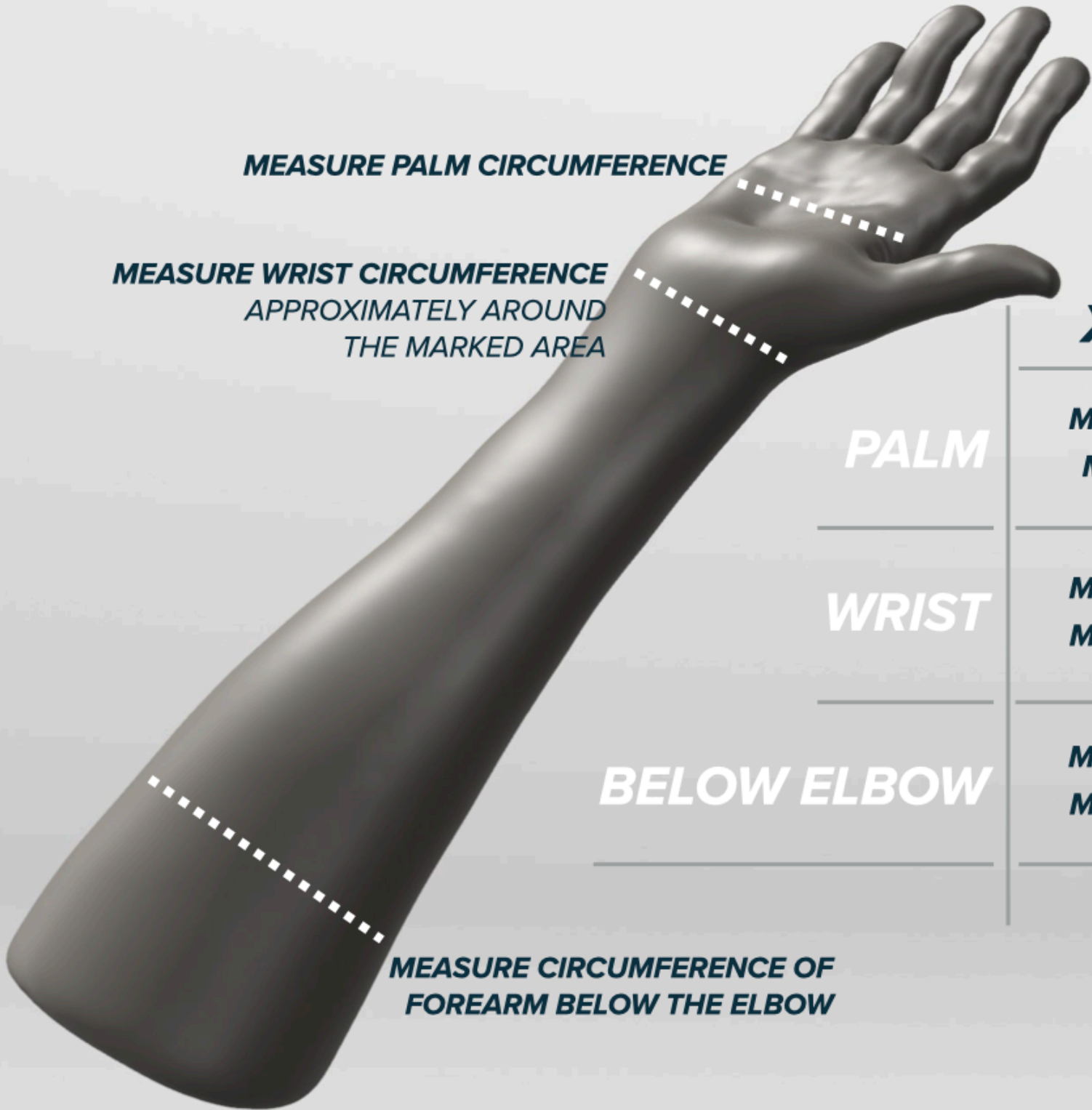
160-240 grams

FOREARM UNIT

*Keeps wrist immobilised in neutral position
with metacarpals free*

LivPrint® FOREARM UNIT

Product Size chart



MEASURE PALM CIRCUMFERENCE

MEASURE WRIST CIRCUMFERENCE
APPROXIMATELY AROUND
THE MARKED AREA

PALM

WRIST

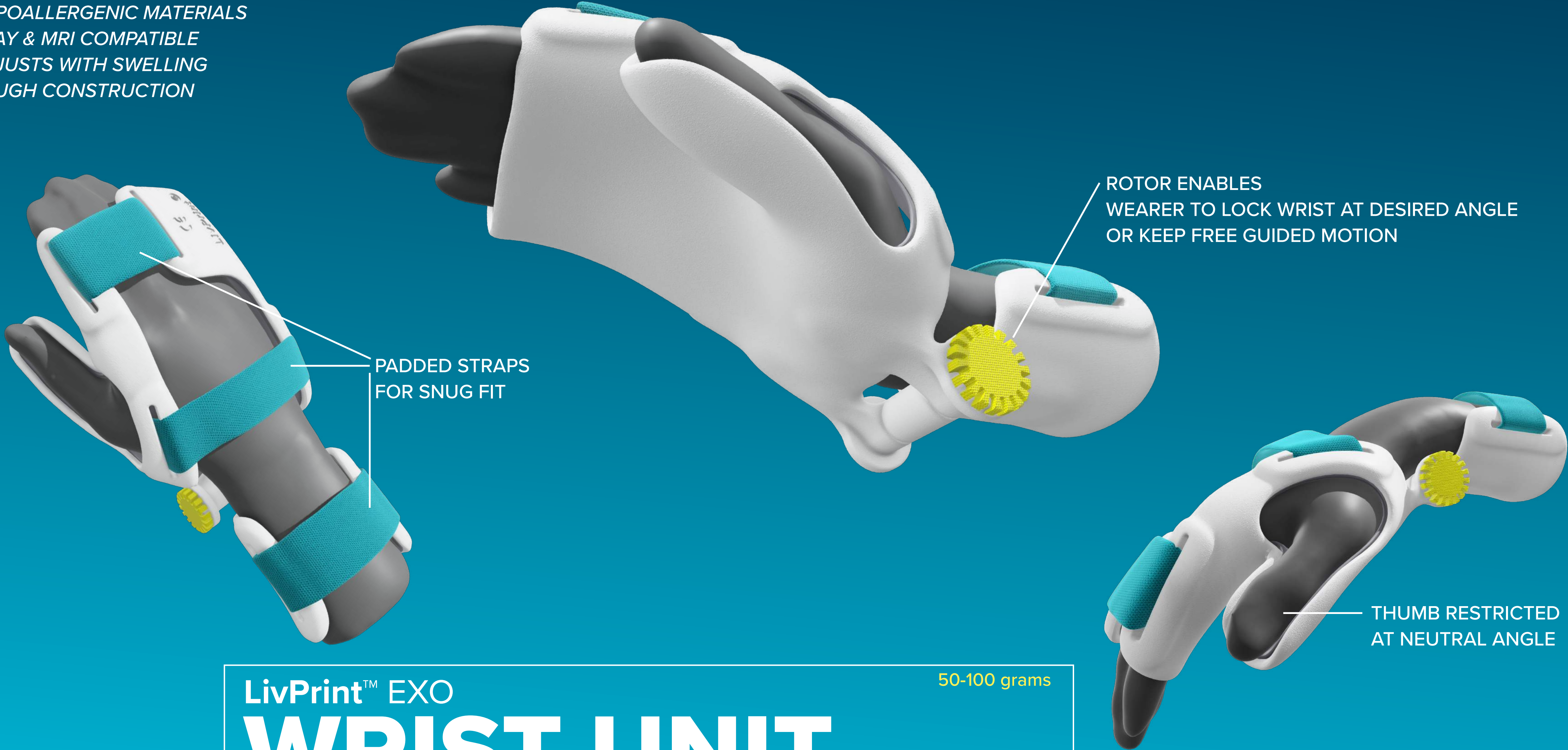
BELOW ELBOW

MEASURE CIRCUMFERENCE OF
FOREARM BELOW THE ELBOW

LivPrint® FOREARM / X-SMALL
Launching soon

	X-SMALL	SMALL	MEDIUM	LARGE
PALM	Min: 3.5 / 4 inches Max: 6 inches	Min: 5 / 5.5 inches Max: 7.5 inches	Min: 7 / 7.5 inches Max: 8.5 inches	Min: 8.5 / 9 inches Max: 10 inches
WRIST	Min: 3 / 3.5 inches Max: 5.5 inches	Min: 5 inches Max: 7 inches	Min: 6.5 inches Max: 8.5 inches	Min: 7 / 7.5 inches Max: 10 inches
BELOW ELBOW	Min: 4.5 / 5 inches Max: 8.5 inches	Min: 6.5 / 7 inches Max: 10 inches	Min: 9 / 9.5 inches Max: 11.5 inches	Min: 10.5 / 11 inches Max: 13.5 inches

- WATER-RESISTANT
- HYPOALLERGENIC MATERIALS
- XRAY & MRI COMPATIBLE
- ADJUSTS WITH SWELLING
- TOUGH CONSTRUCTION



PADDED STRAPS
FOR SNUG FIT

ROTOR ENABLES
WEARER TO LOCK WRIST AT DESIRED ANGLE
OR KEEP FREE GUIDED MOTION

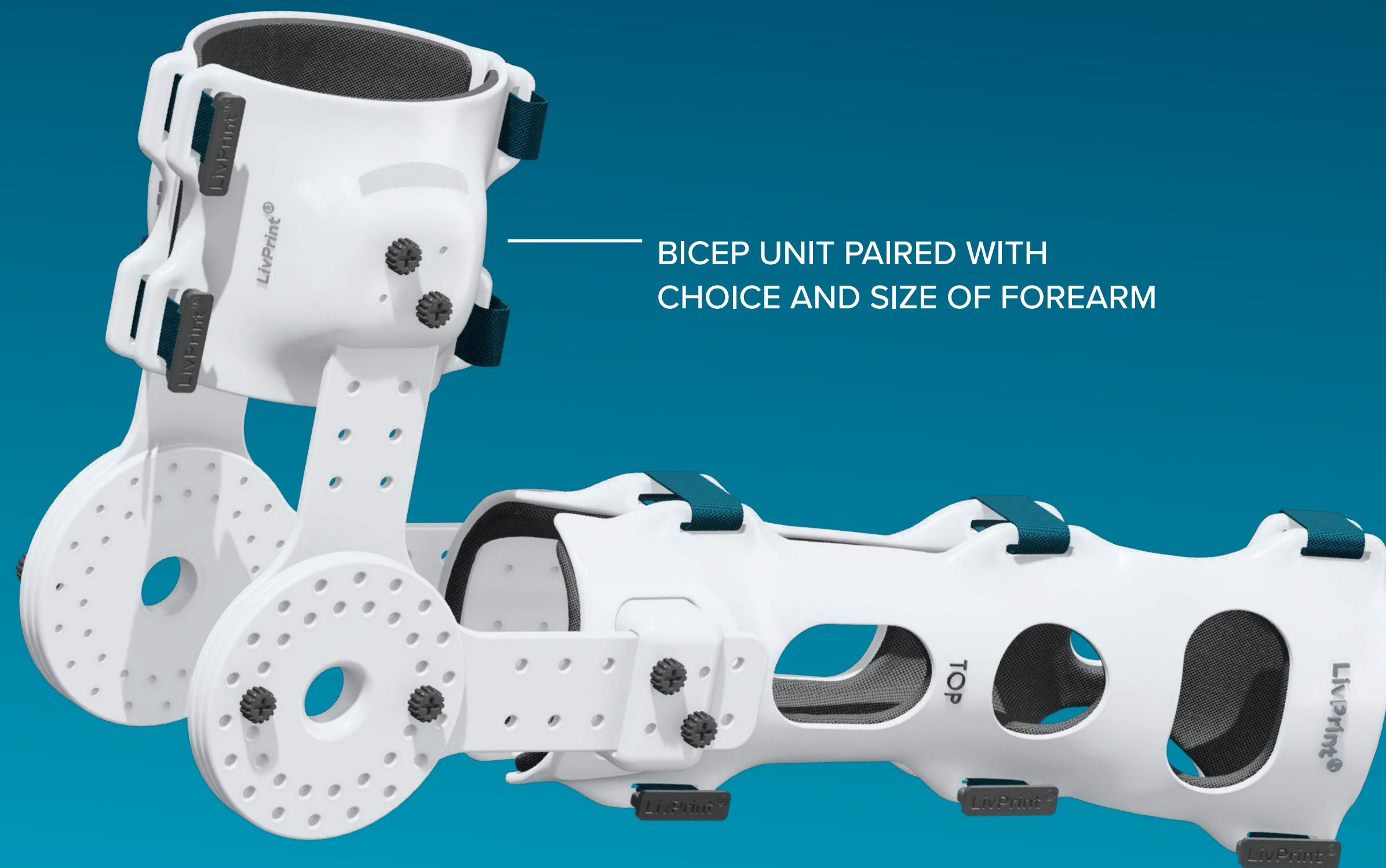
THUMB RESTRICTED
AT NEUTRAL ANGLE

LivPrint™ EXO

WRIST UNIT

Locks the wrist at multiple angles / guided mobility

50-100 grams



BICEP UNIT PAIRED WITH
CHOICE AND SIZE OF FOREARM



BICEP HEIGHT CAN BE ADJUSTED
AS PER WEARER SPECS.

ELBOW LOCKABLE AT EVERY 10°
WITH 360° MODULARITY

LivPrint™ EXO

500-700 grams

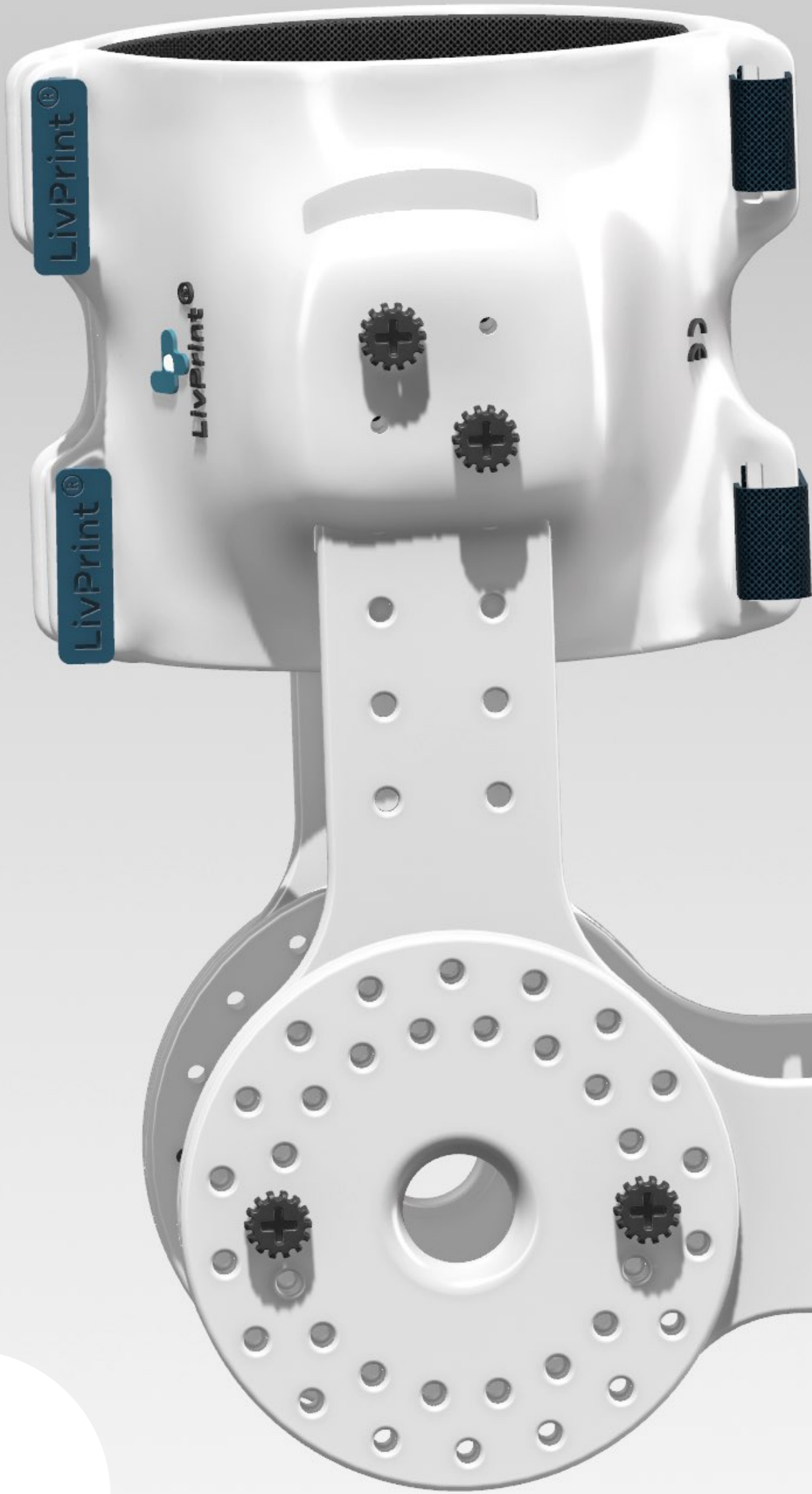
FULL-ARM UNIT


Stabilises the arm and keeps it locked at an angle

- WATER-RESISTANT
- HYPOALLERGENIC MATERIALS
- XRAY & MRI COMPATIBLE
- ADJUSTS WITH SWELLING
- TOUGH CONSTRUCTION

LivPrint® FULL-ARM UNIT

Product Size chart





MEASURE BICEP CIRCUMFERENCE
APPROXIMATELY AROUND
THE MARKED AREA

X-SMALL	SMALL	MEDIUM	LARGE
Min: 6 / 6.5 inches Max: 8.5 inches	Min: 8.5 / 9 inches Max: 12 inches	Min: 11.5 / 12 inches Max: 15 inches	Min: 14.5 / 15 inches Max: 18 inches

LivPrint® BICEP / X-SMALL
[Launching soon](#)



INNER PADDING
HYPOALLERGENIC WRAPPED FOAM

HEIGHT ADJUSTABLE
UPPER-ARM CUFF

PADDED STRAPS
FOR SNUG FIT

R.O.M. CLIPS
MOBILITY CONTROL

LENGTH ADJUSTABLE
LOWER-ARM CUFF

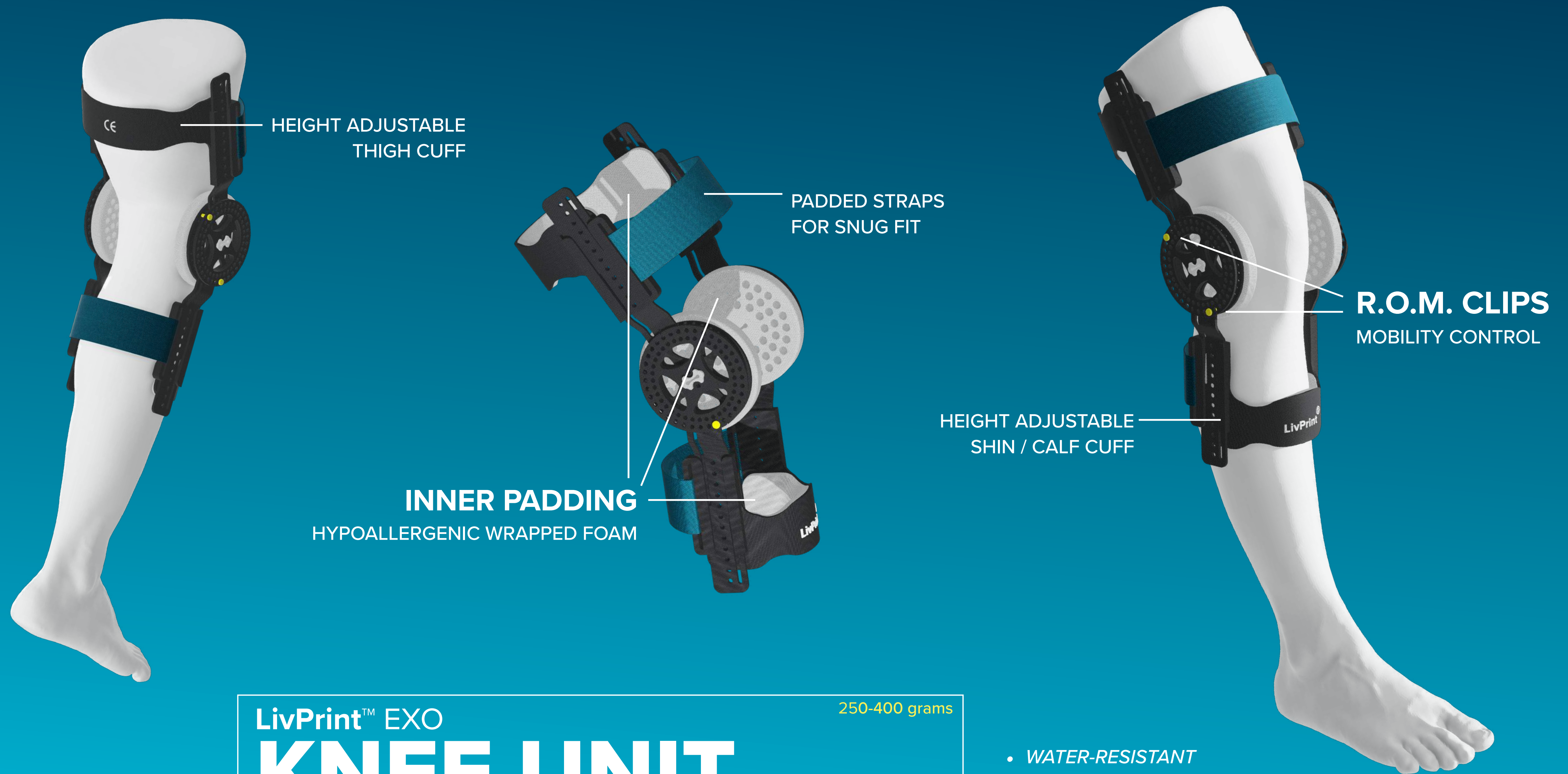
LivPrint™ EXO

250-400 grams

ELBOW UNIT

Locks the elbow and provides R.O.M. function

- WATER-RESISTANT
- HYPOALLERGENIC MATERIALS
- XRAY & MRI COMPATIBLE
- TOUGH CONSTRUCTION



LivPrint™ EXO

250-400 grams

KNEE UNIT

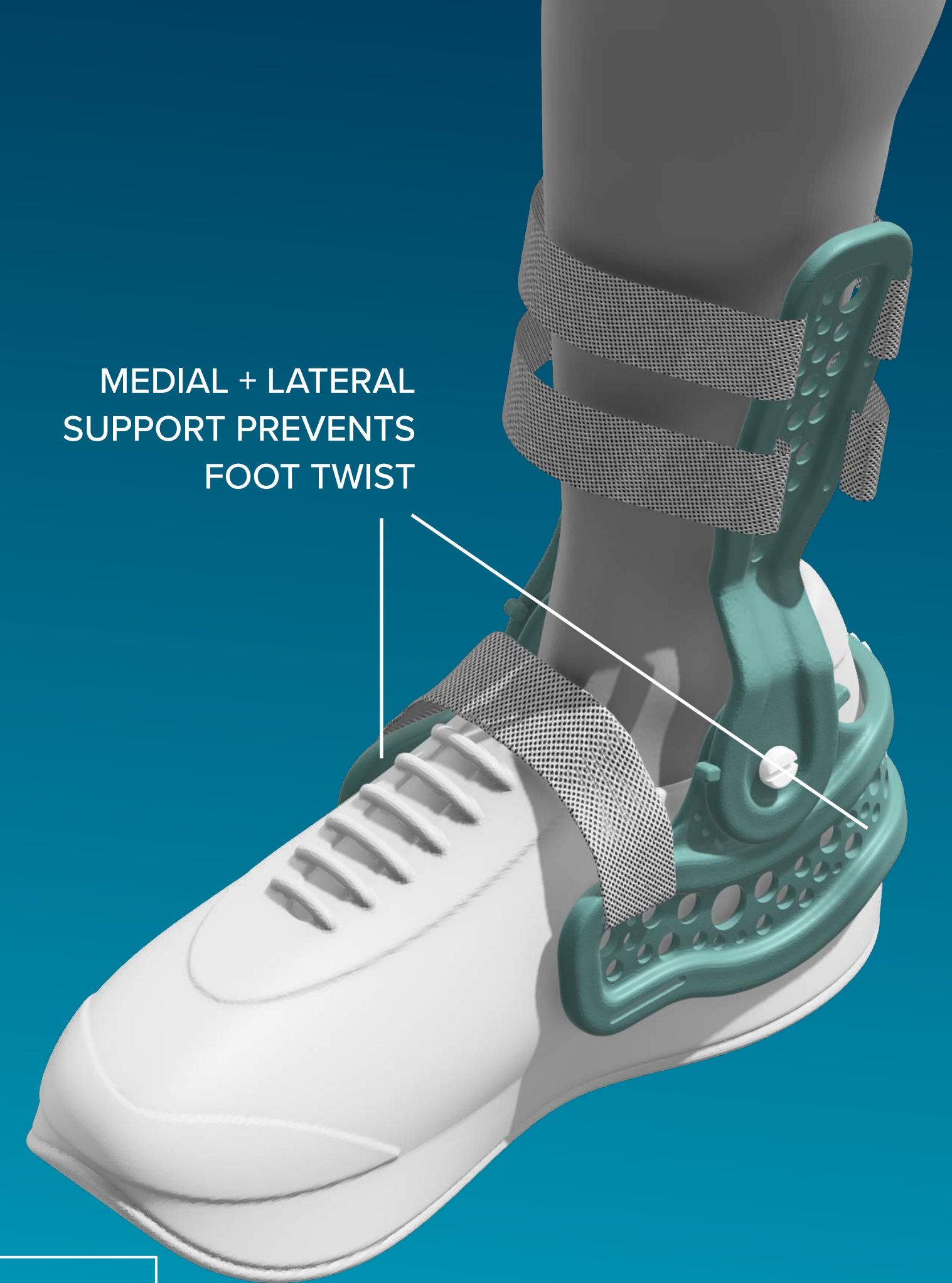
Locks the knee and provides R.O.M. function

- WATER-RESISTANT
- HYPOALLERGENIC MATERIALS
- XRAY & MRI COMPATIBLE
- TOUGH CONSTRUCTION



R.O.M. CLIPS
MOBILITY CONTROL

CUFF SNAPS AND FITS
ONTO ANY SHOE
FROM BOTH SIDES



MEDIAL + LATERAL
SUPPORT PREVENTS
FOOT TWIST

LivPrint™ EXO

100-200 grams

ANKLE STABILISER

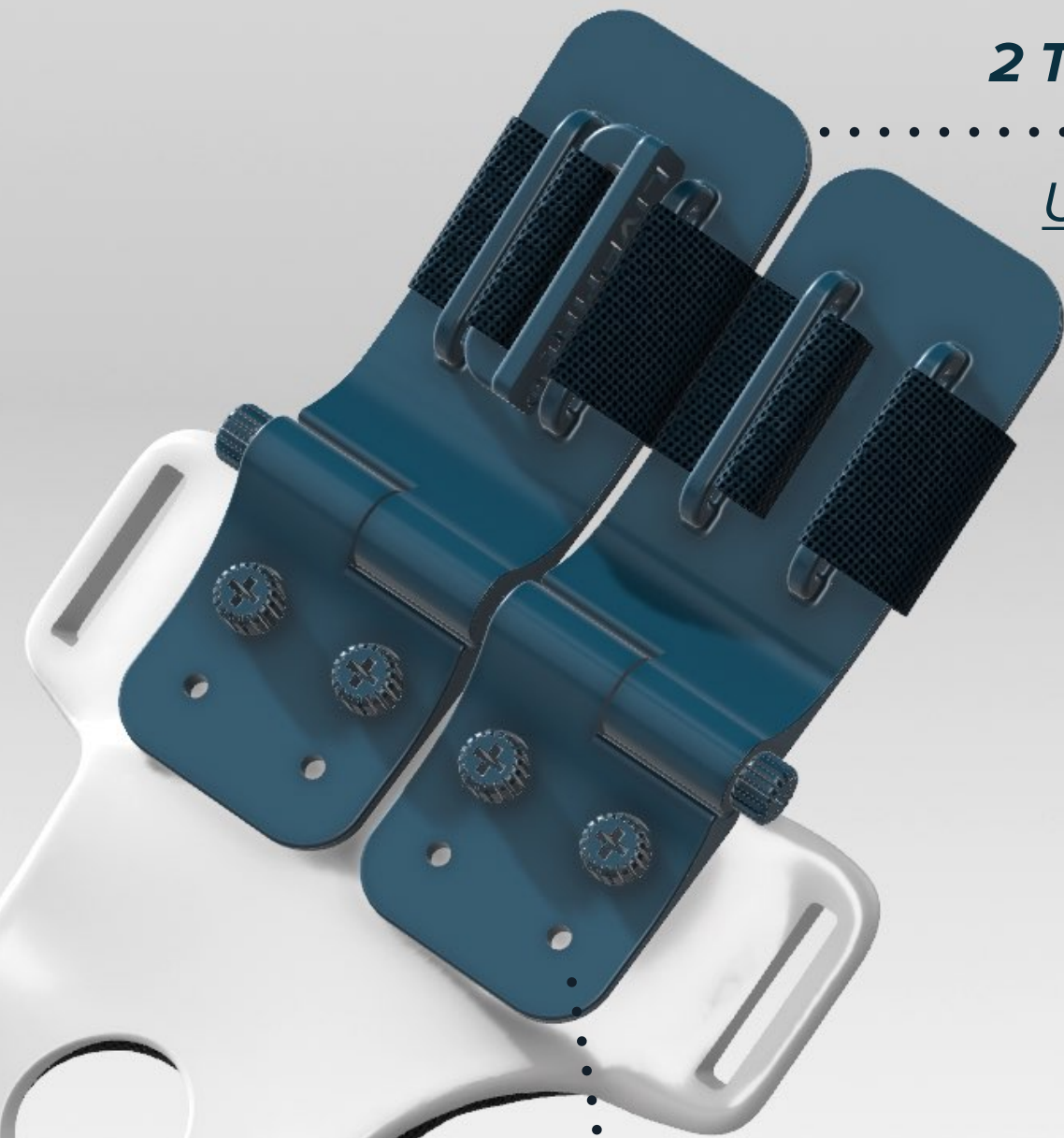
Locks the ankle + provides R.O.M. function on any shoe.

Stabilises the foot in post-op, sprain, ligament injuries etc. cases.

- WATER-RESISTANT
- HYPOALLERGENIC MATERIALS
- XRAY & MRI COMPATIBLE
- TOUGH CONSTRUCTION



**THE TRAYS
CAN BE ROTATED
AND LOCKED IN ANY
DESIRED ANGLE BY
USING THE SCREW.**



2 TRAYS SCREW ONTO THE BOTTOM PART
..... OF THE FOREARM PRODUCT UNIT
Use single or both trays as per requirement

LivPrint® VELCRO WITH BUCKLE
HOLDS 2 FINGERS COMFORTABLY
1 strap provided per tray

ULNA GUTTER TRAY ATTACHED
RADIAL GUTTER TRAY NOT ATTACHED

2 ROWS OF HOLES TO ADJUST FINGER HEIGHT
HELPS IN STANDARD FIT ACROSS SIZES



LivPrint® Radial + Ulna gutter attachment

Advantages of LivPrint®

QUICK REMOVAL & APPLICATION
LESS DOWNTIME FOR DOCTORS / PHYSICIANS

WORKS WITH X-RAY
NO CUTTING OF CAST REQUIRED

PRE-ASSEMBLED UNIT / UNLIKE TRADITIONAL CASTS
LESSER INVENTORY TO TRACK
FOR MEDICAL OUTFITS

LIGHTWEIGHT FABRICATION
LESS THAN HALF THE WEIGHT OF
TRADITIONAL PLASTER-OF-PARIS OR FIBREGLASS CASTS.

HYPOALLERGENIC INTERNAL FOAM
NO RASHES. NO IRRITATION.

LivPrint® Product features

SOFT INTERNAL PADDING
IN ALL PRODUCTS

ZIP-TIES PROVIDED
FOR PERMANENT LOCKING

BREATHABLE DESIGN
FOR VENTILATION
AND WATER DISSIPATION

FULLY WASHABLE
FOR HYGIENE & STERILISATION

WATER RESISTANT OUTER SHELL
AND INTERNAL PADDING

RIGID & TOUGH
EXTERIOR SHELL

BUCKLE AND STRAP
FOR QUICK REMOVAL
AND APPLICATION



+91 99703 02674

+91 99757 10218

connect@livprintlabs.com

201, Gera Serenity, CTS No.15
Near Starbucks Coffee, Koregaon Park
Pune, Maharashtra, 411001